



**K. L. E. Society's  
Basavaprabhu Kore Arts, Science and Commerce College, Chikodi**

(Accredited at 'A' by NAAC with 3.26 CGPA)

Website: [www.klesbkcollegechikodi.edu.in](http://www.klesbkcollegechikodi.edu.in) e-mail: [kles\\_bkcc@rediffmail.com](mailto:kles_bkcc@rediffmail.com) Ph: 08338-272176

## Girls Common Room





**K. L. E. Society's  
Basavaprabhu Kore Arts, Science and Commerce College, Chikodi**

(Accredited at 'A' by NAAC with 3.26 CGPA)

Website: [www.klesbkcollegechikodi.edu.in](http://www.klesbkcollegechikodi.edu.in) e-mail: [kles\\_bkcc@rediffmail.com](mailto:kles_bkcc@rediffmail.com) Ph: 08338-272176

## Sanitary Napkin Vender Machine

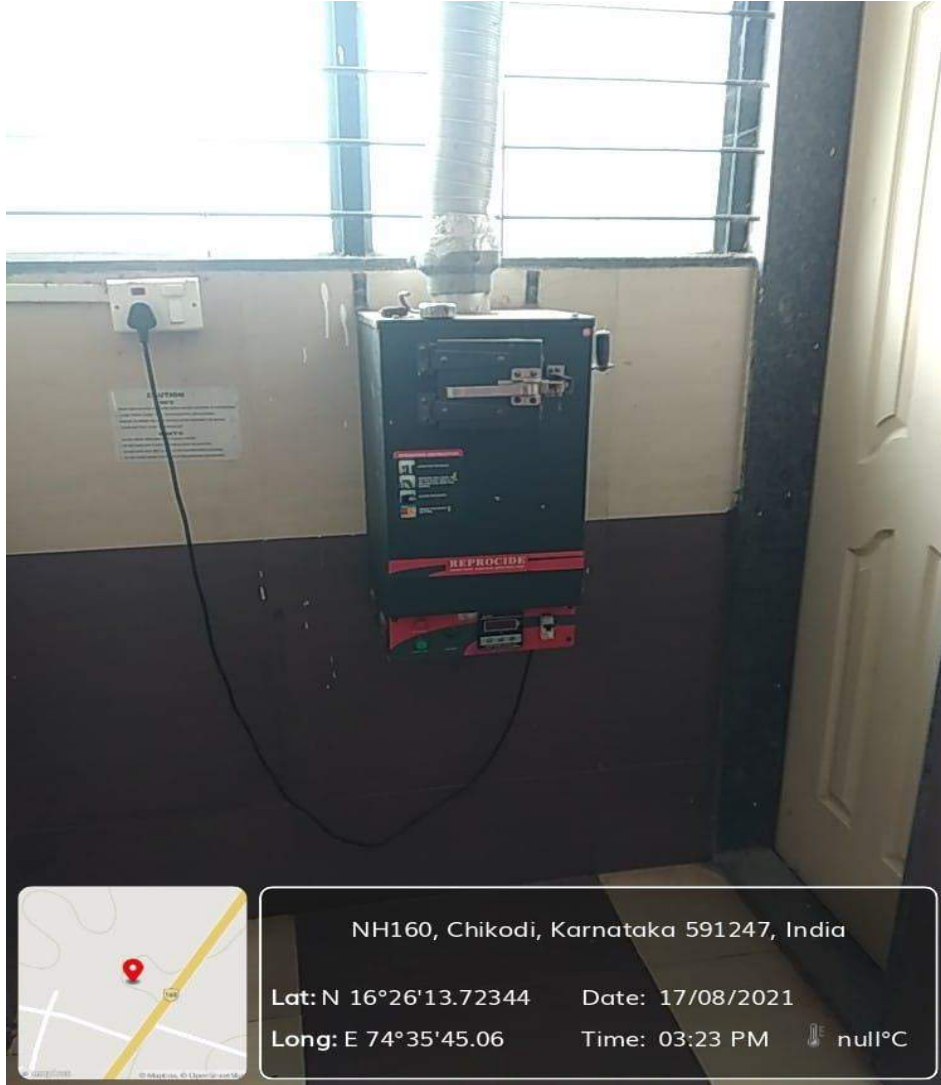




**K. L. E. Society's**  
**Basavaprabhu Kore Arts, Science and Commerce College, Chikodi**  
(Accredited at 'A' by NAAC with 3.26 CGPA)

Website: [www.klesbkcollegechikodi.edu.in](http://www.klesbkcollegechikodi.edu.in) e-mail: [kles\\_bkcc@rediffmail.com](mailto:kles_bkcc@rediffmail.com) Ph: 08338-272176

## Sanitary Napkin Incinerator Machine





**K. L. E. Society's  
Basavaprabhu Kore Arts, Science and Commerce College, Chikodi**

(Accredited at 'A' by NAAC with 3.26 CGPA)

Website: [www.klesbkcollegechikodi.edu.in](http://www.klesbkcollegechikodi.edu.in) e-mail: [kles\\_bkcc@rediffmail.com](mailto:kles_bkcc@rediffmail.com) Ph: 08338-272176

## Drinking Water



NH160, Chikodi, Karnataka 591247, India

Lat: N 16°26'13.73352

Date: 17/08/2021

Long: E 74°35'45.07476

Time: 03:18 PM

🌡️ null°C



**K. L. E. Society's  
Basavaprabhu Kore Arts, Science and Commerce College, Chikodi**

(Accredited at 'A' by NAAC with 3.26 CGPA)

Website: [www.klesbkcollegechikodi.edu.in](http://www.klesbkcollegechikodi.edu.in) e-mail: [kles\\_bkcc@rediffmail.com](mailto:kles_bkcc@rediffmail.com) Ph: 08338-272176

## Well Furnished Rest Rooms





**K. L. E. Society's**  
**Basavaprabhu Kore Arts, Science and Commerce College, Chikodi**

(Accredited at 'A' by NAAC with 3.26 CGPA)

Website: [www.klesbkcollegechikodi.edu.in](http://www.klesbkcollegechikodi.edu.in) e-mail: [kles\\_bkcc@rediffmail.com](mailto:kles_bkcc@rediffmail.com) Ph: 08338-272176

## CCTV Camera





**K. L. E. Society's**  
**Basavaprabhu Kore Arts, Science and Commerce College, Chikodi**  
(Accredited at 'A' by NAAC with 3.26 CGPA)  
Website: [www.klesbkcollegechikodi.edu.in](http://www.klesbkcollegechikodi.edu.in) e-mail: [kles\\_bkcc@rediffmail.com](mailto:kles_bkcc@rediffmail.com) Ph: 08338-272176

## Security Guard



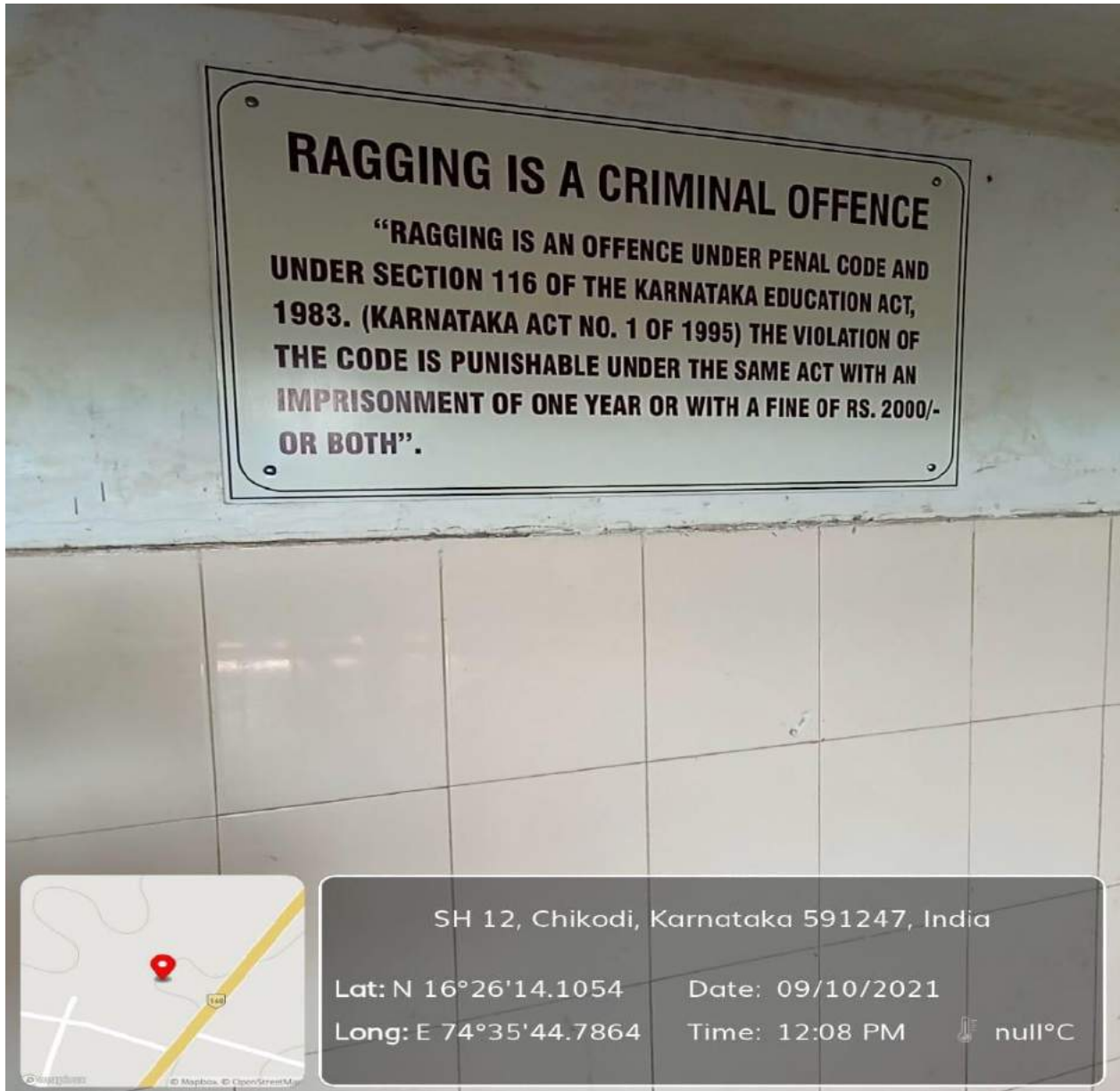


**K. L. E. Society's  
Basavaprabhu Kore Arts, Science and Commerce College, Chikodi**

(Accredited at 'A' by NAAC with 3.26 CGPA)

Website: [www.klesbkcollegechikodi.edu.in](http://www.klesbkcollegechikodi.edu.in) e-mail: [kles\\_bkcc@rediffmail.com](mailto:kles_bkcc@rediffmail.com) Ph: 08338-272176

## Anti Ragging Cell





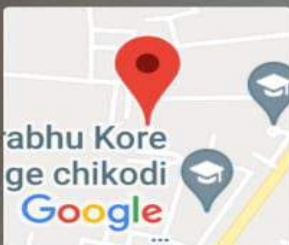


**K. L. E. Society's  
Basavaprabhu Kore Arts, Science and Commerce College, Chikodi**

(Accredited at 'A' by NAAC with 3.26 CGPA)

Website: [www.klesbkcollegechikodi.edu.in](http://www.klesbkcollegechikodi.edu.in) e-mail: [kles\\_bkcc@rediffmail.com](mailto:kles_bkcc@rediffmail.com) Ph: 08338-272176

**Warden**



**Chikodi, Karnataka, India**  
CHQV+JX3, Chikodi, Karnataka 591201, India  
Lat 16.438911°  
Long 74.594956°  
11/10/21 01:42 PM



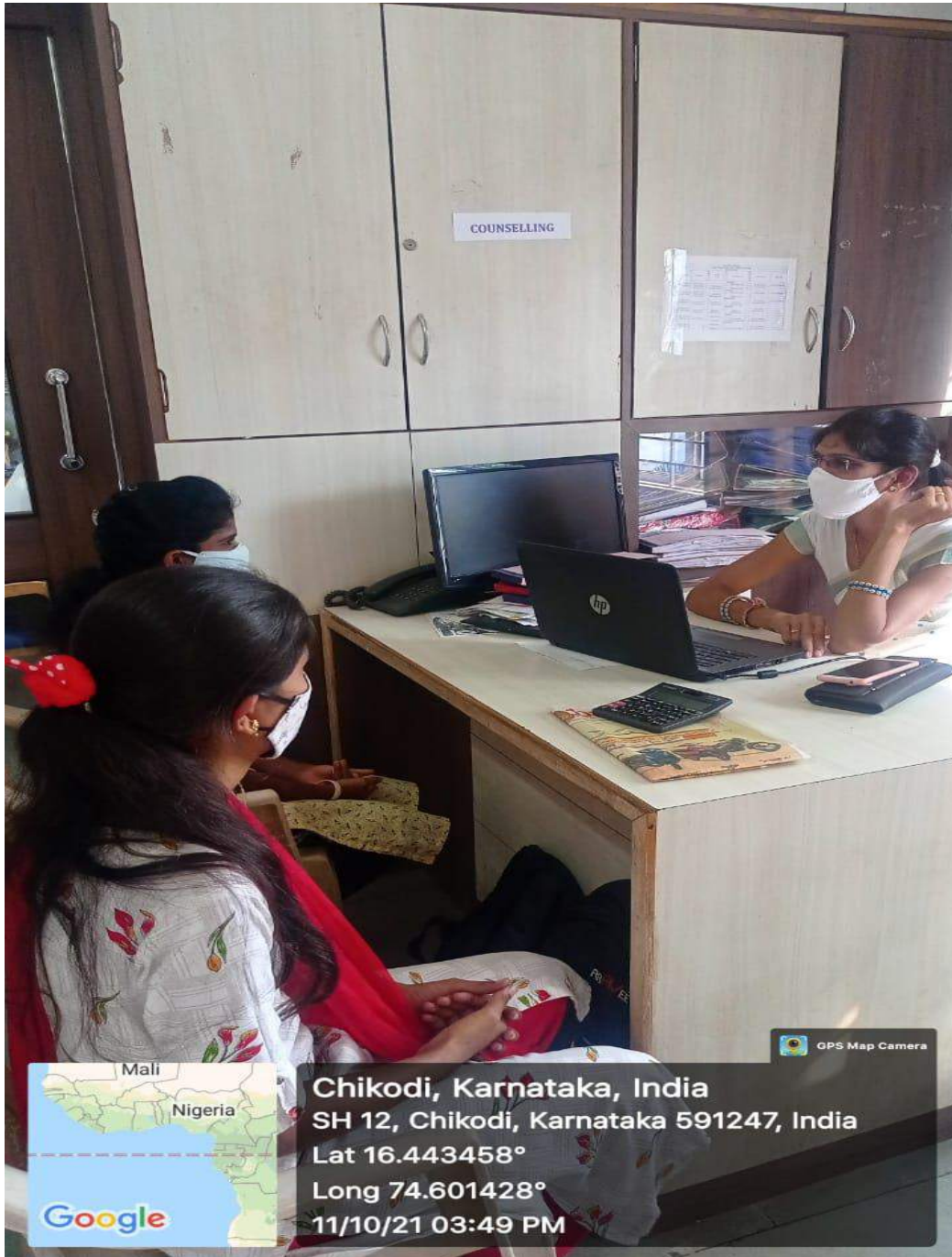


**K. L. E. Society's**  
**Basavaprabhu Kore Arts, Science and Commerce College, Chikodi**

(Accredited at 'A' by NAAC with 3.26 CGPA)

Website: [www.klesbkcollegechikodi.edu.in](http://www.klesbkcollegechikodi.edu.in) e-mail: [kles\\_bkcc@rediffmail.com](mailto:kles_bkcc@rediffmail.com) Ph: 08338-272176

## Counselling





**K. L. E. Society's**  
**Basavaprabhu Kore Arts, Science and Commerce College, Chikodi**

(Accredited at 'A' by NAAC with 3.26 CGPA)

Website: [www.klesbkcollegechikodi.edu.in](http://www.klesbkcollegechikodi.edu.in) e-mail: [kles\\_bkcc@rediffmail.com](mailto:kles_bkcc@rediffmail.com) Ph: 08338-272176

## Suggestion Box





**K. L. E. Society's**  
**Basavaprabhu Kore Arts, Science and Commerce College, Chikodi**

(Accredited at 'A' by NAAC with 3.26 CGPA)

Website: [www.klesbkcollegechikodi.edu.in](http://www.klesbkcollegechikodi.edu.in) e-mail: [kles\\_bkcc@rediffmail.com](mailto:kles_bkcc@rediffmail.com) Ph: 08338-272176

## Grievance Box





**K. L. E. Society's  
Basavaprabhu Kore Arts, Science and Commerce College, Chikodi**

(Accredited at 'A' by NAAC with 3.26 CGPA)

Website: [www.klesbkcollegechikodi.edu.in](http://www.klesbkcollegechikodi.edu.in) e-mail: [kles\\_bkcc@rediffmail.com](mailto:kles_bkcc@rediffmail.com) Ph: 08338-272176

## Separate Comfort for Staff and Ladies in Canteen



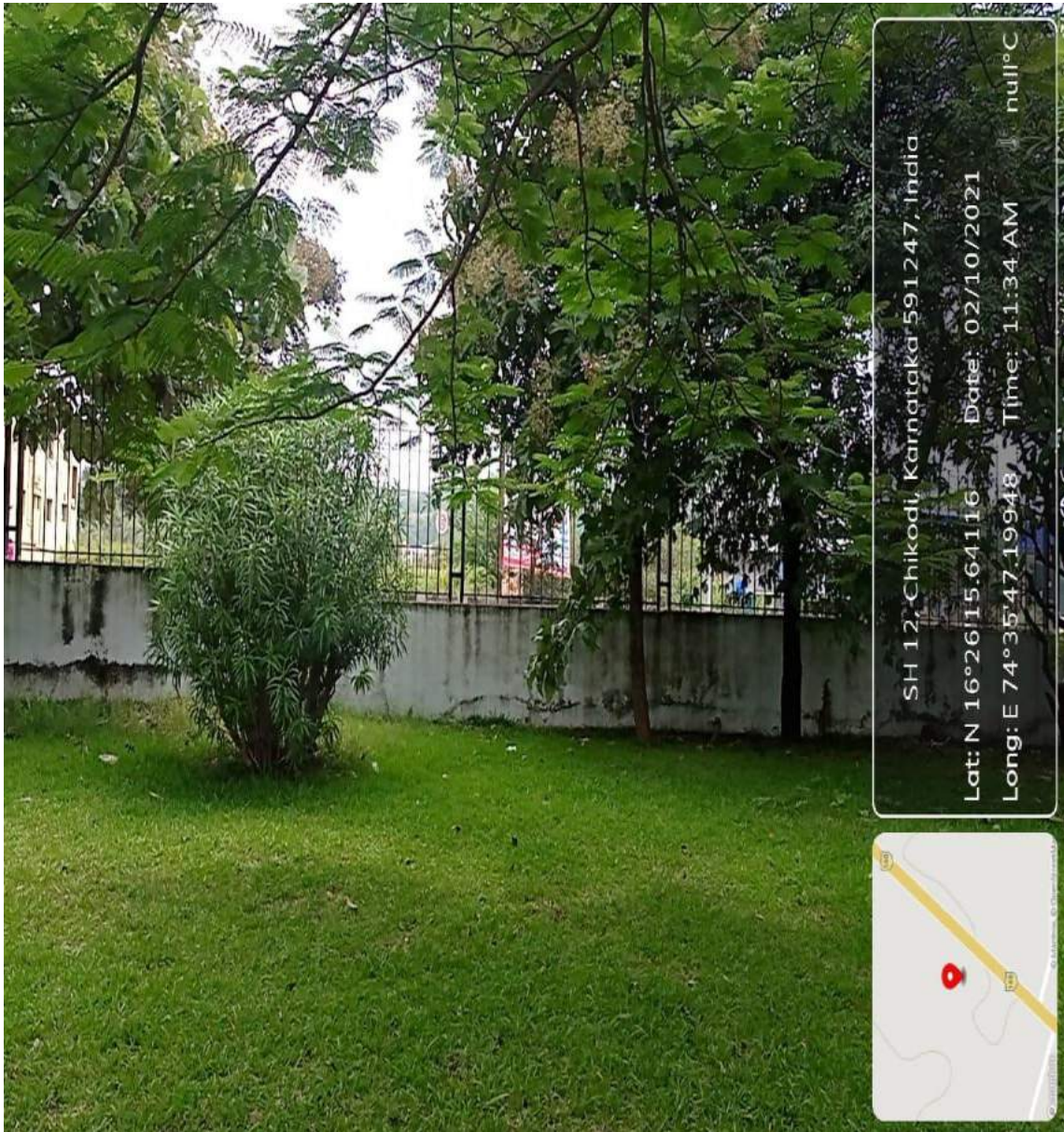


**K. L. E. Society's**  
**Basavaprabhu Kore Arts, Science and Commerce College, Chikodi**

(Accredited at 'A' by NAAC with 3.26 CGPA)

Website: [www.klesbkcollegechikodi.edu.in](http://www.klesbkcollegechikodi.edu.in) e-mail: [kles\\_bkcc@rediffmail.com](mailto:kles_bkcc@rediffmail.com) Ph: 08338-272176

## Compound wall with Iron Grill





**K. L. E. Society's**  
**Basavaprabhu Kore Arts, Science and Commerce College, Chikodi**

(Accredited at 'A' by NAAC with 3.26 CGPA)

Website: [www.klesbkcollegechikodi.edu.in](http://www.klesbkcollegechikodi.edu.in) e-mail: [kles\\_bkcc@rediffmail.com](mailto:kles_bkcc@rediffmail.com) Ph: 08338-272176

## Ladies Reading Room in Library





**K. L. E. Society's  
Basavaprabhu Kore Arts, Science and Commerce College, Chikodi**

(Accredited at 'A' by NAAC with 3.26 CGPA)

Website: [www.klesbkcollegechikodi.edu.in](http://www.klesbkcollegechikodi.edu.in) e-mail: [kles\\_bkcc@rediffmail.com](mailto:kles_bkcc@rediffmail.com) Ph: 08338-272176

## Post Office Box

